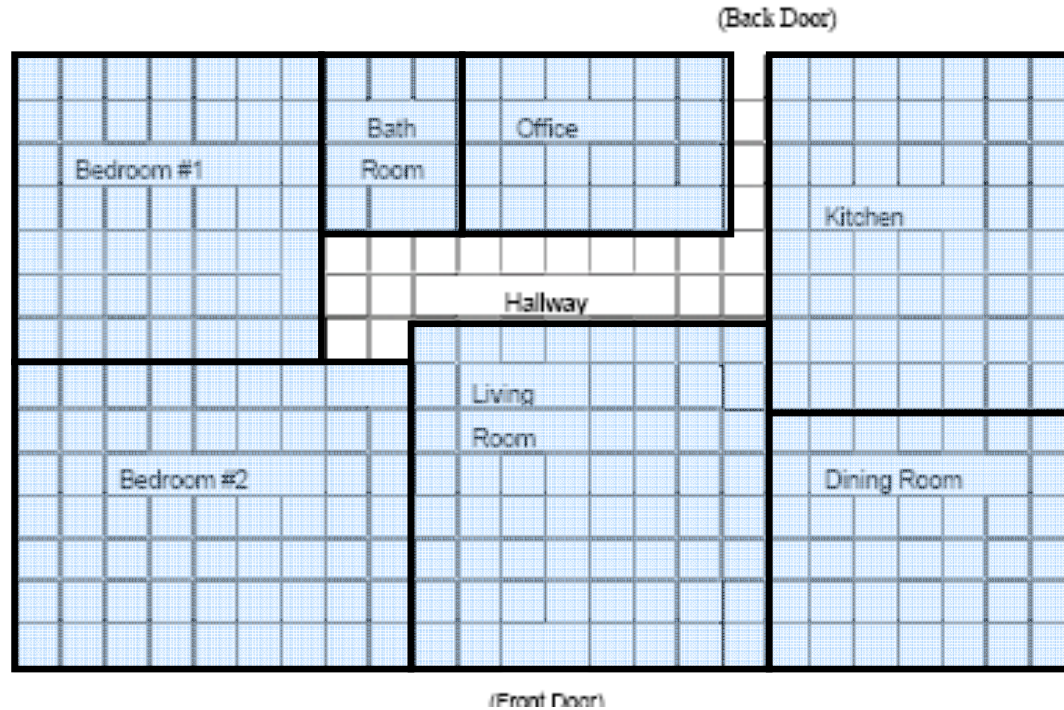


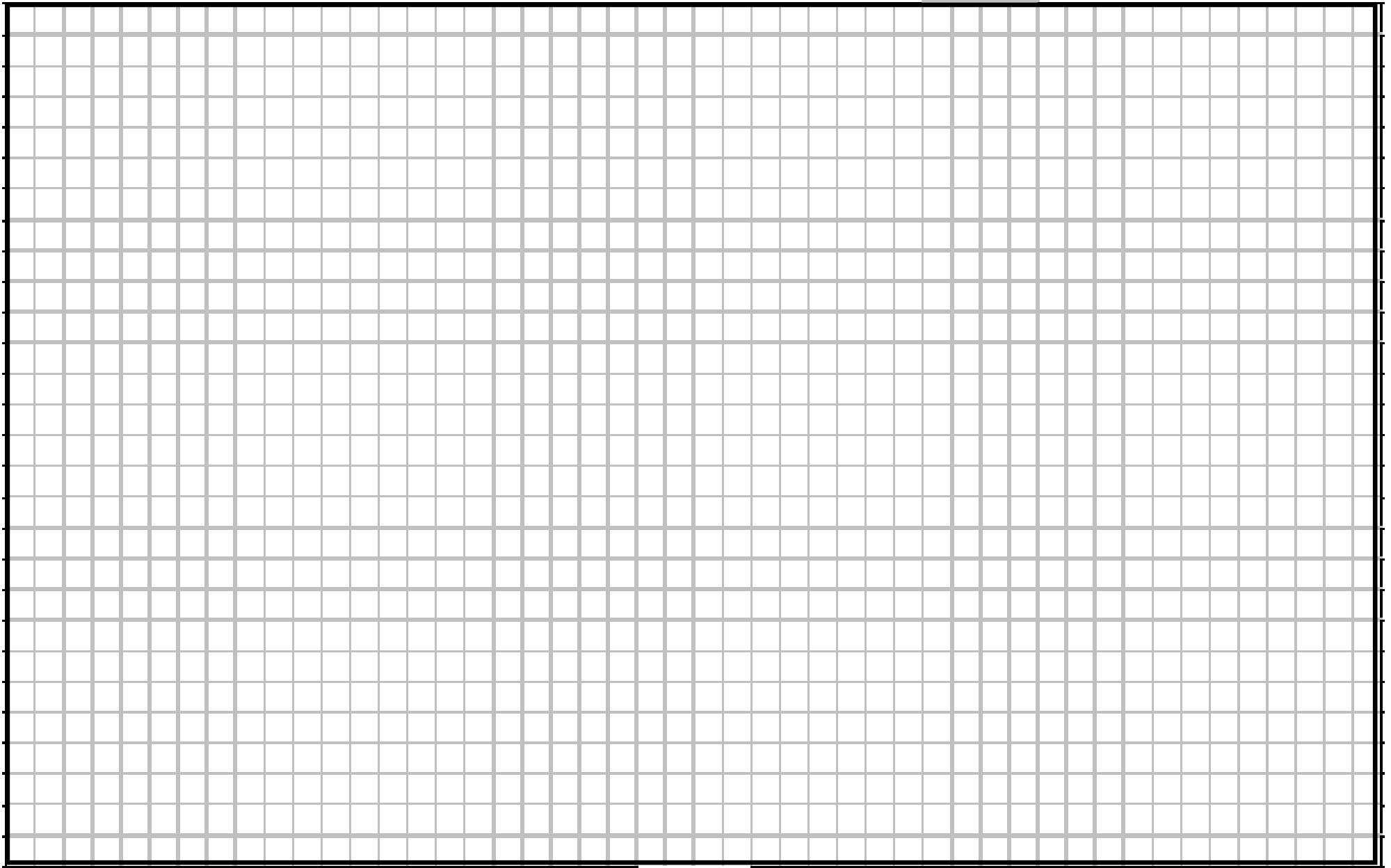
Directions: Shown below is the layout of the house you're considering having built. **Each square on the diagram is 50cm x 50cm.** To start off, fill in the measurements of each room in the blanks below the diagram.



List the square meterage of each of the following rooms (1 sq. = 50cm x 50cm)

- | | |
|--|-------------------|
| _____ Bedroom #1 | _____ Bedroom #2 |
| _____ Bathroom | _____ Office |
| _____ Kitchen | _____ Dining Room |
| _____ Living Room (not including hallway area) | |

Zooming In- Directions: To show more detail, let's redraw the house design a little larger. This means we'll actually be using a smaller ratio or "scale." Each box represents 25cm. Your job is to redraw the house, using the previous diagram to determine where the lines will go to represent each room correctly.



Zooming In continued

Once you've drawn in the lines to show each room, you can start adding some furniture. As we have a larger diagram, we now have room to show more detail as to what will be in each room.

Please select a place to add the following items to each room:

Bedroom #1:

- a) A 120cm by 180cm bed
- b) A 90cm x 150cm desk
- c) A 60cm x 90cm dresser

Bedroom #2:

- a) A 180cm x 180cm (queen) bed
- b) A 90cm x 180cm desk
- c) A 60cm x 120cm dresser

Bathroom:

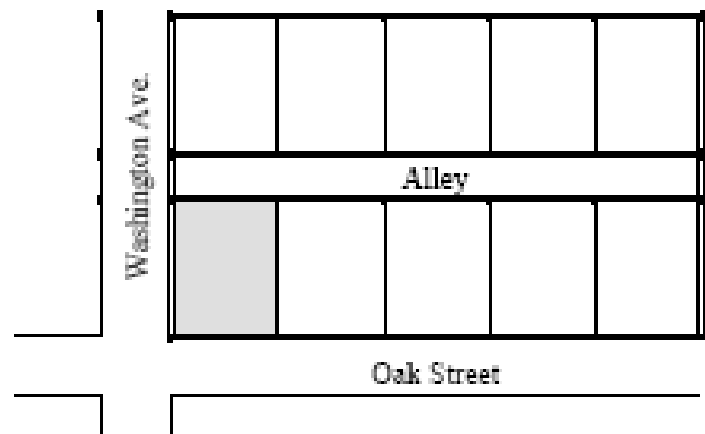
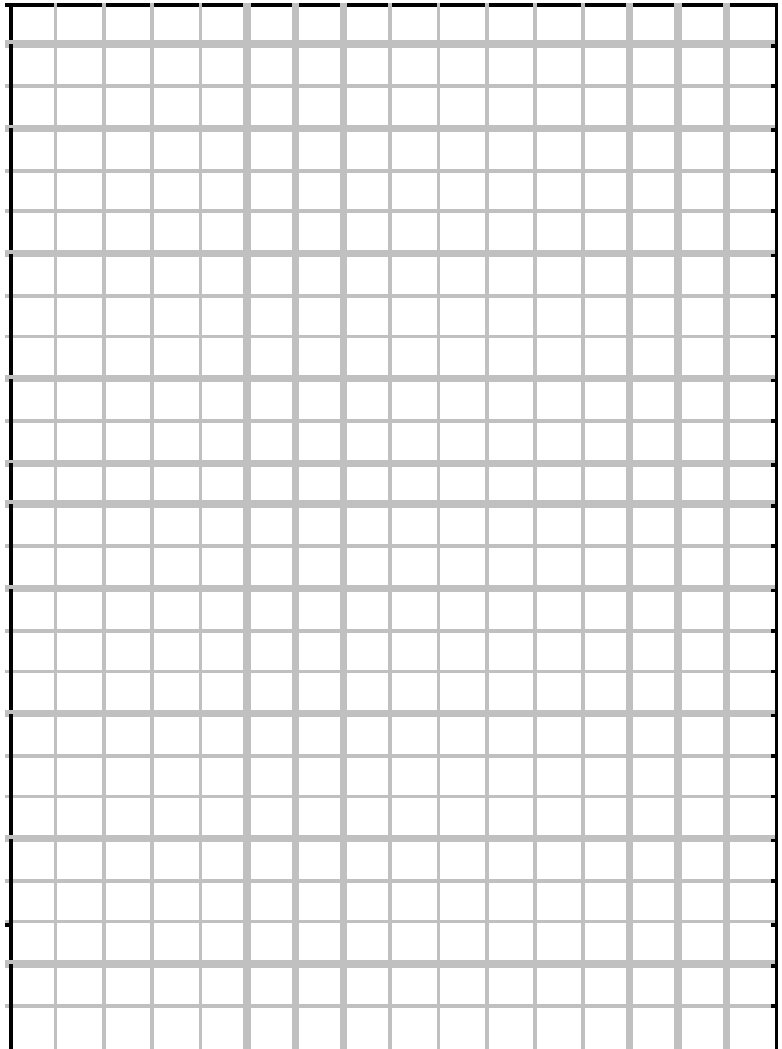
- a) A 90cm x 150cm shower
- b) A 45cm by 60cm sink
- c) A toilet

Continue by adding at least 2 or 3 items to each of the other rooms.

Zooming Out - Overview: For this part, we will be doing the opposite of the zooming in we just did. This time we want to “zoom out” to see the whole garden and look at how the house will fit on the plot you’ve just purchased. This time each square on the diagram will represent a 1.5m x 1.5m square. The plot you have is a 24m by 37.5m corner plot, as shown below.

Start by reviewing the size of your house, and work out how large it will appear on the new layout. Then start picturing where on the plot you would like to place it. Once you've decided where the house should go, you should also add the following items:

- A 600cm x 600cm garage with a driveway at least 240cm long (either facing the alley or Washington Ave)
- A 120cm wide walkway from the front door out to whichever street is in front of the house
- A back garden, either 360cm by 360cm or 240cm by 600cm.
- A 120cm wide walkway from the garage to the house (either to the back door or the front door, depending on your design)



Bird's Eye View
Here's a look at exactly where your garden is in relation to the streets and other gardens. Use this to help decide which way you want your house and garage to face.